

# nicolas tye architects

community

education

retail

regeneration

commercial

living arts

the long barn studio limbersey lane maulden bedfordshire mk45 2ea  
f : 01525 406677 f : 01525 406688 e: info@nicolastyearchitects.co.uk  
www.nicolastyearchitects.co.uk

© confidential copyright to nicolas tye architects





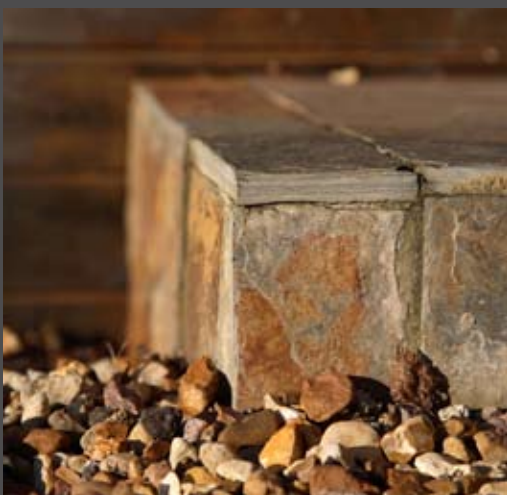
## practice statement

The world around us is changing immeasurably, and key to us is architecture which follows no trends or fashions but the real agenda of providing invigorating healthy environments for all to use. Central to our philosophy is that design is generated by the needs of its people, we encourage clients involvement so that we may fully understand the key considerations for every project, however we also challenge these ideas preconceptions to create sensitive, unique and personal environments.

Our experience covers projects from £200,000 - £20million in a variety of sectors from commercial office developments, high quality residential works, retail outlets, regeneration schemes, the arts and educational projects. We aspire to making extraordinary buildings and spaces, even from the most difficult of design briefs.

By pushing the boundaries of design we aim to create elegant, timeless and invigorating architecture and design. We invest a great deal of energy throughout the design and construction process, to ensure all parties involved fully appreciate our design intentions thus ensuring that the best possible design is ultimately revealed.

Our operation is not insular, we work closely with a group of the countries leading consultants to ensure projects are protected and assisted by the best organisations and people available, in doing this we achieve the very best architecture and design for our clients.



... design flair, experimental, driven, committed, responsive, sustainable, dynamic, innovative, competitive, sensitive, surprising, fresh, challenging, attentive, project control and delivery...



## nicolas tye : curriculum vitae

Training through North London University and University College London Nicolas Tye developed his unique thinking to architecture and design whilst also working in his years out of education during his practical training years with his fathers studio Alan Tye Design and ORMS Architects in Clerkenwell. During the academic and training years in office Nicolas Tye also used his skills in practical building, by constructing his own accommodation. His first project was developing a warehouse apartment in Shad Thames by Tower Bridge in the early 1990's and then in 1995 buying a empty concrete shell in Clerkenwell with no services etc within an old shoe factory on St.John Street, well before the area became the vibrant hub that it is now.

### **Career Training :**

During his time in training offices whilst working through his education Nicolas Tye was project architect for 2 restaurants within the Millennium Dome, co-ordinating works with Richard Rogers masterplan design. He was also responsible for a series of £3million commercial serviced office space fit outs including : 20,000sq ft in Grafton Street, Mayfair, 12,000 sq.ft, at Panton House (off from Haymarket) and a 15,000 sq.ft development at No.1 Cornhill, London.

### **A new studio - Nicolas Tye Architects :**

In 2004, with a number of years in the ORMS London office, Nicolas had the opportunity to buy a derelict 2500 sq.ft barn in Bedfordshire near to the Thameslink line and Flitwick. The intention was to purchase, convert and then commute to his existing role in London. Wishing to understand more about the hands on issues of building, Nicolas Tye made to leap of faith to combine a year out of his project architect role with building his own house. In so doing, beyond the traditional architect design work, learning how to site manage, coordinate and complete trades work from carpentry, brick/blockwork, electrics and plumbing to site labouring led to fundamental knowledge on the practicalities of understanding construction first hand.

### **Qualifications :**

RIBA Awards Judge 2011 CPRE (Campaign to Protect Rural England)  
Judge 2010-2011 Advisor to Peterborough City Council on the Urban Design Review Panel  
Civic Trust Awards 2008/9 - Judge  
Campaign to Protect Rural England Design Awards 2008 - Judge  
Royal Institute of British Architect - Registered Practice  
Members to the Architects Registration Board Bedfordshire Architects Association - Committee Member  
University of Luton - Visiting Lecturer  
National Middle Schools' Conference 2006 - Honorary Lecturer on School Design  
Civic Trust Awards 2006/07 - Judge  
Civic Trust Awards 2008/09 - Judge



## nicolas tye architects : team members



To view our individual team member CV's please visit the 'team' page on our website.  
[www.nicolastyearchitects.co.uk](http://www.nicolastyearchitects.co.uk)



**top to bottom, left to right:**  
benson themuka, richard langridge,  
jo hodson, philip couzens, george yam,  
piotr rzonka, kasia rzonka, ed davidson



## awards and accreditations

### membership and accreditations:

- Civic Trust Awards 2011- Judge
- CPRE (Campaign to Protect Rural England) Judge 2010-2011
- Advisor to Peterborough City Council on the Urban Design Review Panel
- Civic Trust Awards 2008/9 - Judge
- Campaign to Protect Rural England Design Awards 2008 - Judge
- Royal Institute of British Architect - Registered Practice
- Members to the Architects Registration Board
- Bedfordshire Architects Association - Committee Member
- University of Luton - Visiting Lecturer
- National Middle Schools' Conference 2006 - Honorary Lecturer on School Design
- Civic Trust Awards 2006/07 - Judge
- Civic Trust Awards 2008/09 - Judge
- Campaign to Protect Rural England Design Awards 2008 - Judge
- Royal Institute of British Architects (RIBA) Chartered Practice
- Architects Registration Board (ARB)
- Royal Society of Arts (RSA)
- Construction Line
- ISO14001 and 9001 accredited

### recent awards:

- International Design and Architecture Awards 2011- Shortlisted in the Residential £2.5-5 million category
- International Property Awards 2011- Highly Commended in Office Architecture
- Bedfordshire Association of Architects- Best New House 2011
- Northern Design Awards 2010
- RIBA National Award 2009
- RIBA Eastern Region Awards 2009- Finalists
- Design Week Awards 2009: Best Work Place Environment Award
- National Wildflower Centre - International Competition - Shortlisted Finalists from 144 teams - £5million
- Campaign to Protect Rural England (CPRE) Mark 2009
- Creative East Awards- Best Workspace Environment 2009
- LABC (Local authority Building Control) Regional- Best Commercial Project under £1million 2009



## nicolas tye architects

### living

... design flair, experimental, driven, committed, responsive, sustainable, dynamic, innovative, competitive, sensitive, surprising, fresh, challenging, attentive, project control and delivery...



## greystone houses

our proposals respond to the surroundings utilising white render, but in simple modernist forms with timber cladding and elegant glazing systems



Located in the centre of Radlett this exclusive area has generous house plots with generally substantial houses.

Our site currently has a single bungalow of no historical or architectural note. Our clients brief was to demolish the existing house and replace this with 2 generous houses, one of which to become their new house, the other to sell on.

Each house is some 600m<sup>2</sup> spread over 3 floors, which negotiate the changing levels of the site. As such the first floor from the front approach leads you through to the rear garden level.

Our proposals respond to the surroundings utilising white render, but in simple modernist forms with timber cladding and elegant glazing systems, which create a delicate blend of privacy and views.



## barn conversion, home counties

a new building was slid into the extrusion of the existing space respecting the frame and roof of the original barn



The derelict barn dating back from 1860 and used for the last 150 years as a grain store is now been converted into a 4 bedroom family house/studio. Sensitivity to the locality and to the existing framework of the building formed a delicate brief between new architecture and old.

A new building was slid into the extrusion of the existing space respecting the frame and roof of the original barn. A vast fully glazed gable end with views of the local countryside forms the end of a journey through an open plan 250m<sup>2</sup> ground floor space. Cut-outs up to the upper level form triple height spaces for living and entertaining.

Centralised air, vacuum, security, data and lighting control enhance the use of spaces. Natural and organic materials were used wherever possible.





## grand cayman

the houses are designed to give an impression of floating, like a boat on the sea. The ground level has generous openings so that it appears lighter in comparison with the upper level



Located on the North side of the island, a 0.91 acre large site on Rum Point Drive in a less developed area of Grand Cayman. The proposal consists of dividing the plot in two irregular shaped plots which will allow both land and homeowners to have a beach view from the house and vanishing edge pool. The landscape proposals are very minimalistic and location orientated, whereby vegetation is chosen to reflect plants and natural surfaces found on or next to the beach to minimise maintenance and water usage for watering.

The houses are designed to give an impression of floating, like a boat on the sea. The ground level has generous openings so that it appears lighter in comparison with the upper level which features less glazing and a higher roof upstand. The entrance elevation is solid, closed from views from the public road and with an open entrance area. Side walls are angled at 11.5 degrees to create overhangs for design aesthetic and solar shading purposes. A roof terrace as party deck with covered bar and lounge area is proposed allowing for panoramic views around the island and sea. The Southeast facing elevation is mainly solid to protect from the sun, but the north-eastern elevation is open to the beach allowing for unspoiled views towards the sea.



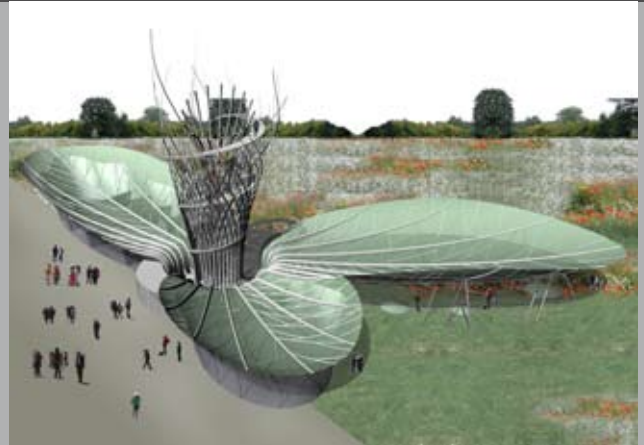
## tomorrow's townhouse

our proposal consists of flexible multi-level terraces, expansive and lively semi private community spaces, as well as a safe, naturally lit underground parking solution to accommodate the needs of a variety of homeowners



The proposed standard home is designed to high environmental standards and is to include features such as a groundwater heat pump, photovoltaic (PV) panels located on the roof, as well as an integrated mechanical heat recovery system. Other features include a water harvesting system, mechanical solar louvres and internal blinds controlling the level of solar gain, as well the integration of a rainwater harvesting system for use alongside the washing machine, for plant watering and WC flushing.

Carefully selected utility products will also ensure minimum energy expenditure. Additionally, each house will be fitted with an electric car charger as standard. The aim of this is to encourage homebuyers to consider the positive affects of choosing electric cars over the standard polluting vehicle.



## nicolas tye architects

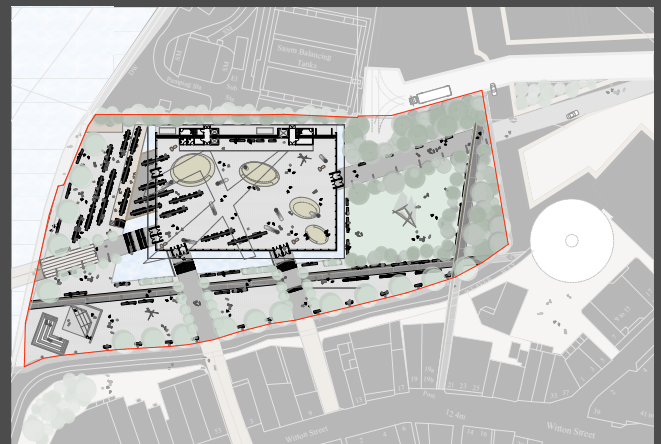
### arts

... design flair, experimental, driven, committed, responsive, sustainable, dynamic, innovative, competitive, sensitive, surprising, fresh, challenging, attentive, project control and delivery...



## cultural centre, northwich

our proposals centre around creating an innovative, cutting edge civic regeneration hub. A new community catalyst to the area, designed with a respectful nod to the local context of this unique and challenging site

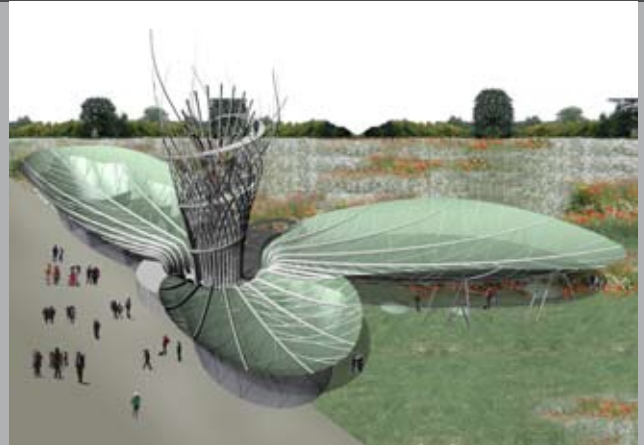


Our proposals centre around creating an innovative, cutting edge civic regeneration hub. A new community catalyst to the area, designed with a respectful nod to the local context of this unique and challenging site.

Integrated with the historical and local distinctiveness, our proposal provide a solid 5 storey high 'services, circulation, accommodation and structural screened wall', to the northern side of the site. The building provides a vibrant mix of cultural connections at ground floor, with 4 interactive interpretation stone 'hubs'. These stone shaped spheres with their brightly coloured interiors provide meeting places for the activities of 'eating', 'information', 'display' and 'seating'.

The lightweight glazed box which encloses the ground floor travels vertically through 4 levels allowing a magnificent spectacle of open civic space. The angled stilt structure and floating exhibition/display walkways provide a mesmerising cathedral like space waiting to be explored. Creating a building sited at a higher land level negates the complex issues of interactions to existing services in the ground whilst also providing a designed flood prevention strategy.

At the upper levels access to the auditorium and public viewing areas provide cantilevered panoramic views across the entire district; a beacon for Northwich



## wildflower centre

our building seeks to inspire through its connection between humans and nature responding through its time-based visual colour changing roof canopy, environmentally controlled air flow, water collection and energy use



'Wondrous' the feeling that an 'adapting' building should attain. This is our goal.

This is a unique and exciting project providing a new gateway for the enrichment of life, learning and joining with nature in enveloping ourselves within its ecosystem.

Our building seeks to inspire through its connection between humans and nature responding through its time-based visual colour changing roof canopy, environmentally controlled air flow, water collection and energy use. The flowering building contains 3 petals, 2 enclosed and one open aired production area centrally culminating with a central spiraling floral axis.



## forest of marston vale conference and restaurant suite

the creation of a new function space to sit alongside the existing visitor centre. We decided to challenge our clients' vision, proposing a modern, radical piece of architecture to excite and inspire



Having been approached by the Forest of Marston Vale with plans to create a new function space to sit alongside the existing visitor centre, we decided to challenge our clients' vision, proposing a modern, radical piece of architecture to excite and inspire.

Seeking inspiration from the forest whilst employing a clear environmental agenda, the proposals are based on the concept of the tree canopy, with the main space raised on stilts to reduce the physical footprint of the building, whilst affording spectacular views of the surrounding countryside. Fragmented sections of green tinted glazing and bespoke 'eco-panels' are combined to create an innovative facade which creates a dappled lighting effect, re-creating the effect of sunlight passing through a canopy of leaves. Accommodating a multi-purpose function room, catering facilities and a world class cafe, the centre was conceived as a catalyst for generating funds to sustain the centre and its invaluable work for the local forest, whilst creating a remarkable and iconic piece of architecture for the region.



## ihub business and conference centre

three primary interlocking forms provide the accommodation to create areas of intersections, organised to form a central courtyard space supporting a large open area



We aim to provide iHUB Daventry with an exemplar, iconic building tailored to meet the evolving needs of the users and affording maximum adaptability. Three primary interlocking forms provide the accommodation to create areas of intersections, these three forms are organised to form a central courtyard space supporting a large open area in which to hold trade markets, performances and events to supplement the main functional aspects of the brief.

The primary, 4 storey innovation unit addresses the road by creating a striking public frontage whilst introducing a 'buffer zone' to the site. The road-side elevation is cloaked in a veil of coloured glass panels which become animated by the light and provide views from the roadside into the circulation spaces. The main public spaces, such as the exhibition hall, are located towards the back of the site adjacent to the canal. This location seeks to maximise the outlook over the canal and provide a main reference point for visitors to the site due to its proximity to the access point from the car park. Intersecting these two buildings is the black metal clad cafe space 'floating' over the ground below to create a dramatic piece of visual theatre. Cantilevering over towards the canal the cafe affords panoramic views over the surrounding landscape creating a clear connection with the environment.



## nicolas tye architects

### commercial

... design flair, experimental, driven, committed, responsive, sustainable, dynamic, innovative, competitive, sensitive, surprising, fresh, challenging, attentive, project control and delivery...





## studio space

the studio's building strategy is based on an elegant rectangle of predominantly glazed elevations capped and enclosed at each end by larch timber clad 'book ends'



Set down in a stretching landscape the new studio, its materiality subtle, its form rooted in simplicity – emblematic of modern design.

The studio's building strategy is based on an elegant rectangle (a form harmonious with the existing linear adjacent barn) of predominantly glazed elevations capped and enclosed at each end by larch timber clad 'book ends'. Cor-ten detailing further enhances the sense of place, reflecting the old, discarded agricultural machinery and steelwork of the barn. The timber clad boxes are utilised more on the southern elevation to protect the building from overheating; whilst high levels of insulation ensure the building far exceeds building regulation requirements on heat loss. Employing a wind turbine, rainwater harvesting, eco paint, low energy central controlled lighting and underfloor heating, a central vacuum and air control systems, the studio, consciously approaches contemporary issues of sustainability.

The studio building has recently been awarded a number of prestigious awards including: RIBA National Award 2009, CPRE Regional- Best Commercial Project 2009, Design Week Awards- Best Commercial Project 2009, Creative East Awards- Best Workspace Environment 2009, RIBA East- Spirit of Ingenuity- Best Commercial project 2008.



## international bank

with its astonishing stone finished open plan high specification layout, dramatic lighting and wenge finished joinery providing a leading world-class banking destination



Located adjacent to the heart of London's west end shopping district parallel to Oxford Street. The existing building comprised of a empty concrete shell to the ground and basement levels. The upper floors were a mixture of Cat A and Cat B fit outs which needed significant modification or complete replacement.

The proposals were to create a executive boardroom level on the 5th upper most floor, providing the highest of quality to its finish and fittings. On the 4th floor there would be a series of waiting and meeting rooms along with a formal reception for high net worth individual clients facing the main street with the rear section of the building forming the banking representatives office area. The remaining upper floors are fitted out to a very high office specification with Knoll bench desking, Vitra chairs, bespoke tea-points, Bisley storage units, Modular lighting and bespoke joinery. The ground floor would provide the retail banking facility with its astonishing stone finished open plan high specification layout, dramatic lighting and wenge finished joinery providing a leading world-class banking destination. The basement level would contain the security vaults and safety deposit boxes along with a dramatic elongated approach corridor, reception and waiting facilities for high net worth individuals. The remaining basement area being utilised for back of house training and storage.



## panton house, haymarket, london

this elegant stone facade building was purchased as a refurbishment project to re-fit the mixed retail use of the ground floor with 6 floors of B1 office space above



Located in central London on the junction of Haymarket and Panton Street, this elegant stone facade building was purchased as a refurbishment project to re-fit the mixed retail use of the ground floor with 6 floors of B1 office space above. In total the project completes some 35,000 sq.ft of space, with 10,000sq ft of retail frontage with 25,000sq ft of B1 office space with circulation and atrium space to the rear.

By simplifying the floor plates and placing a new circulation and glazed atrium to the rear maximised the site potential by creating additional floor area to all floors and an extended additional penthouse floor. The works provided shell provisions to the retail units with Cat A fit out level to all floors. The circulation and front of house areas provided a high specification stone finish with elegant lighting details, stainless steel handrails with timber doors and glass lift enclosure.

project completed with orms



## graffton street, mayfair, london

A high specification Cat.B fit-out for serviced office space units with associated support areas with a total floor area of some 25,000sq.ft. completed as a design and build contract



Located in the heart of Mayfair our proposals sought to blend the mix of high quality, high end design with the utilitarian feel of Clerkenwell loft type office spaces. This existing 1960's concrete frame building naturally provided a series of 2,000-3,000sq.ft. B1 office areas which could again be sub-divided into further serviced office space units.

Perimeter trunking and high level galvanised trays efficiently solved all the M+E issues to the project. The glamorous glazed screen fronted reception area leads you through to centralised circulation giving access to all 12 sub-divided office units.

project completed with orms



## nicolas tye architects

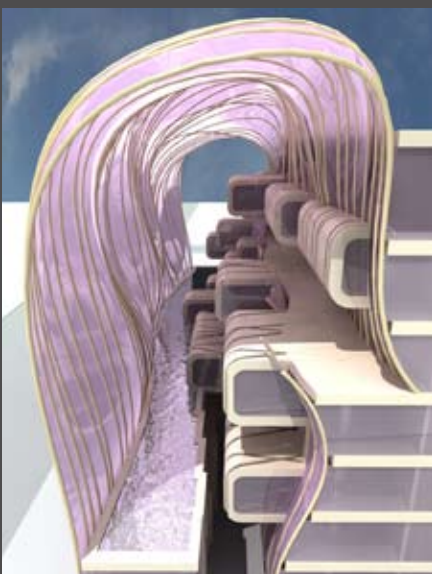
### regeneration

... design flair, experimental, driven, committed, responsive, sustainable, dynamic, innovative, competitive, sensitive, surprising, fresh, challenging, attentive, project control and delivery...



## veil, teheran

the 'Veil' provides a translucent changing coloured screen which floats and breaks down the rigidity of facades to provide an elegant and captivating solution



'A salute to the beauty under Veils in Iran'

Initial design studies centered around the culture of Iran, the creation of abstract traditional symmetrical tessellated patterns of mosaic and rugs, persian gardens with their reflecting pools, courtyards and the street-site 'veil', covering and protecting the honesty of what lies behind.

The 'Veil' provides a translucent changing coloured screen which floats and breaks down the rigidity of facades to provide an elegant and captivating solution. This enclosure facilitates the passive cooling strategy for the building with a generous water pool at first floor level providing a flue of cool air to insulate the building from heat gain from the west and south. This 'atrium' space is pierced by a series of cantilevered pods which dance through the space providing a sequence of extraordinary viewing points throughout the building's levels. The functional framework of requirements to the brief is insured through our programme, providing all the relevant commercial, car parking, external areas, retail and residential requirements. A sustainable and enjoyable building is our goal. Enhanced height retail facade spaces, vertical garden and commercial walkways at higher levels provide a enriched workspace and mixed use environment.



## st pauls church, estonia

the strong affinity to Arvo Pärt makes a significant contribution to the design proposals



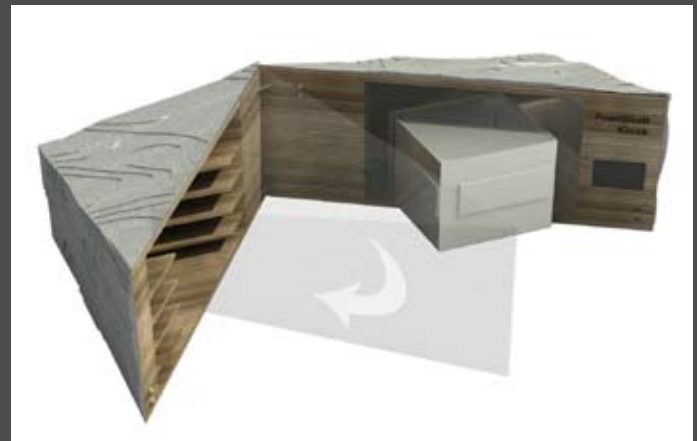
Tintinnabuli, the compositional musical style created by Arvo Pärt forms the mathematical, musical, spatial and physical 'tempo' of our minimalistic design approach. The strong affinity to Arvo Pärt makes a significant contribution to the design proposals. The masterplan reflects that of 'musical score' with lines of music 'staff / stave' with water filled 'notes' dancing across the square. People will play an interactive part of this 'music' of people, nature, buildings and landscape and all come together to produce 'New Tintinnabuli' in this space.

The existing church will have a lightness of touch gentrified solution, which breathes life into this historic building providing a wonderful concert hall with retractable seating. This is in conjunction with elegant locally supplied timber detailing reflective of the site context. The building also incorporates the relevant functional services and facilities required, along with a Arvo Pärt quiet contemplation room and adjacent external enclosed courtyard connection to our new building.



## sea wave shelter and kiosk

we are using the strengths in nature and the local context of the site to provide a innovative, robust and build-able solution to the shelter and kiosk



We are using the strengths in nature and the local context of the site to provide an innovative, robust and buildable solution to the shelter and kiosk. By studying, waves, natural stone, water erosion, time and the influences that these have on our seaside ecosystems, we are guided to these two exciting solutions.

The 'Seawave Shelter' responds to the ideologies of a wave working and moving above you, responding to the light and air that is constantly moving around to create a playful and ever changing rhythmic and responsive solution which can excite all the senses by its activity. Our solution explores the very nature of shelter with its structural columns providing wind breaks to prevailing winds, platforms for seating and areas of display and interaction with the public.

The kiosk is embracing the robust form of a sea-stone, acting as an opening pearlshell which has one strong and firm fixed side and one opening moveable side to invite interest and provide ample public display.





## iskcon centre

hertfordshire owned and operated by the international society for krishna consciousness (iskcon). a place of vaishnava-hindu worship and a working dairy farm



The existing building is Grade II listed, as well as being situated on a greenbelt it falls within the conservation area of Letchmore Heath. The Manor building, built in mock tudor style around 1884, houses the main shrine, and the rooms of ISKCON's late founder. The key out buildings are the stable block and 17th century; both fully converted and used for a college. For many years the existing buildings have been insufficient to provide for the community of students and worshippers and we, therefore, were invited to put forward a proposal to further the facilities.

Our proposal sought to have a minimum impact upon the openness of the greenbelt and on the environment, whilst also being sensitive to its relationship with the conservation area. It would have been less acceptable to propose extensions to the existing buildings, and thusly our design was made up of four new buildings linked by a glazed walkway.

These four buildings take on their own usage, ranging from classrooms to dining halls. Perhaps the key design feature to these buildings was to capture a sense of the Hare Krishna people and their way of life. This was achieved through the vibrant and playful colour scheme to the external facades, derived from the key colours of the religion it resulted in a design that truly reflected the people who would go on to use it.



## nicolas tye architects

### retail

... design flair, experimental, driven, committed, responsive, sustainable, dynamic, innovative, competitive, sensitive, surprising, fresh, challenging, attentive, project control and delivery...



## café chain

a re-branding exercise to the new business, as a roll out series of hospital based Cafes. Simplicity is the key to its success



A relatively new company have asked us to provide a re-branding exercise to the new business, as a roll out series of hospital based Cafes. Simplicity is the key to its success. Flexible spaces, enticing materials, textures, lighting and finishes encourage the differing users. These users utilise the range of seating types and positions through the café for their short coffee break or long lunchtime visit.

Integrated design from the scheme concept through to corporate signage ensure a synergy to the whole environment.



## mayfair distillery

specialising in fine whiskey, brandy and port, the unit is complimented with elegant lighting to highlight the specialist joinery and showcase its products



A new brand and store type is manifested in 'The Mayfair Distillery'. Specialising in fine whiskey, brandy and port, the unit is complimented with elegant lighting to highlight the specialist joinery and showcase its products. The Mayfair Distillery is a missing element in this high-end high street environment only 100 yards from the Ritz and Green Park.

A light refurbishment of the basic unit, utilising elegant lighting and providing a visual feast for the displaying of products, is enhanced by chunky oak shelving, glass cabinets, backlit display boxes, cigar trays, comfy seating and taste testing area. This presents a new high-end drinking box within this illustrious area.



## money shop

a re-branding exercise to introduce a new prototype that would push the boundaries as set by the current design in order to establish a relationship with a broader demographic



We were approached by the Dollar Financial Group to contribute to a re-branding exercise to their portfolio of some 200 'The Money Shop' high street stores.

The main objective was to introduce a new prototype that would push the boundaries as set by the current design in order to establish a relationship with a broader demographic.

As part of the design process we examined how spaces were used and designed counters with integral transaction trays and leaflet storage to minimise clutter and convey a slick no-nonsense operation. By combining a low maintenance material palette based on good quality finishes the end result creates a comfortable environment for both customers and staff.



## bedford retail units

using coloured glass in a displaced grid arrangement, the buildings harness a sense of vibrancy and creativity, reflecting the activities on the street scene below



The clients brief was to design a mixed use scheme within the heart of Bedford for a site near Castle Lane, facing the river. Our proposal seeks to revitalise Bedford's town centre with the introduction of a colourful and vibrant cultural quarter.

The scheme comprises of five individual blocks which are strategically placed to form public piazzas at critical points in the scheme. The scheme feeds into the existing surroundings, enticing people to enter from two main access points, the main road and the river. Castle lane has been pedestrianised and visitors are drawn into the heart of the scheme by two opposing, angular structures.

Cafe and retail areas will inhabit ground floor levels to attract footfall and will casually spill out on to the piazzas in the summer months. Galleries and specialised artists shops and studios will also inhabit the ground floor to help nurture the sense of creativity and culture. Residential and office areas will be situated on upper floors and will look out on to the piazzas below, adjacent river and the public green to the east.

Using coloured glass in a displaced grid arrangement, the buildings themselves harness a sense of vibrancy and creativity, reflecting the activities on the street scene below.



## nicolas tye architects

### education

... design flair, experimental, driven, committed, responsive, sustainable, dynamic, innovative, competitive, sensitive, surprising, fresh, challenging, attentive, project control and delivery...



## school entrance

our proposals sought to provide a more visible, exciting identification and new entrance to the school which serves functionally as a reception/foyer and as a new connection to the upper floors for disabled users



The identity of the original approach and entrance to this school has been overshadowed by more recent additions to this growing school. Following a full site assessment, our proposals sought to provide a more visible, exciting identification and new entrance to the school which serves functionally as a reception/foyer and as a new connection to the upper floors for disabled users. The entrance creates a new welcoming and inspirational space as a first impression to the school, its ethos and future desires.

An elegant but simple form creates the new entrance, with bold signage clearly identifying to all, but in particular visitors, the main route way to reception which is located away from the car parking area. From a practical point of view the scheme also provides a buffer zone between the public and pupils, a secure entrance and new office space for the head teachers and admin staff.





## space for personalised learning

space4PI is a Government backed multi-million pound series of projects as part of the Building Schools for the Future programme



Our scheme provides for a new Space for Personalised Learning within the existing library zone of a busy Upper School. Space4PI is a Government backed multi-million pound series of projects as part of the Building Schools for the Future programme, with ten pilot schools across England to create, design, deliver and operate spaces which can support Personalised Learning.

The school's focussed theme is to develop independent, confident and socially responsible young people through the use of flexible learning opportunities designed to build the experiences, understanding and skills through which they can define and realise their own success.

The budget for the project was carefully controlled to ensure both critical factors of maximum efficiency and high quality were maintained throughout. The scheme largely centered around an extensive internal fit out to dramatically transform the existing dull and cluttered library space into a fresh, invigorating and multifunctional space for all.



## lancot lower school, dunstable

natural light enters from high level coloured windows which wrap around the perimeter of the dining hall



The school currently does not have a designated dining area, and has been utilising the sports hall as dining as well as assembly area. This arrangement means that the curriculum and lessons time are inflexible as only one of the functions can occur at any one time.

The proposed dining hall extension is located at the back of the school which is currently used only for bin collections. It will link up internally with the existing school with easy access points from both the classroom block and the playground with level access throughout. The majority of the natural light will be entering from the high level coloured windows which wraps round the perimeter of the dining hall.

External soft landscaping and strategically positioned slot windows offer enjoyment of the external space and the original service and bin storage area has been transformed into a pleasant walkway where student can move freely from the playground to the dining hall.



## food technology facility

we have been asked to produce a proposal based on the essential need for a Food Technology department with facilities for up to around 20-24+ children



We have been asked to produce a proposal based on the essential need for a Food Technology department with facilities for up to around 20-24+ children. In line with the aims of the school to provide a balanced curriculum which recognises the difference in aptitude and ability in each child, the new kitchen facility will accommodate these requirements in a fun and stimulating environment that promotes learning.

The projects desire is to ensure that this facility is an innovative and class leading food technology department, that will primarily benefit the school but also allow for a wider community use. workstation units for 20+ children along with associated staff and storage areas will be accommodated, the primary zone will form a contemporary open plan space with maximum day lighting and a clean, simple, tactile and robust materials palette to feature both internally and externally.



## nicolas tye architects

### community

... design flair, experimental, driven, committed, responsive, sustainable, dynamic, innovative, competitive, sensitive, surprising, fresh, challenging, attentive, project control and delivery...



## bereavement suite

The aim of the project was to transform the physical environment of the bereavement suite for the benefit of the bereaved and the frontline staff who care for them



The aim of the project was to transform the physical environment of the bereavement suite for the benefit of the bereaved and the frontline staff who care for them. Enhancing both the patient and staff experience of death.

Enhancing the Healing Environment improves support for the dying and the bereaved in an imaginative way. We want to make the emotionally painful time of end of life and bereavement as dignified and supported an experience as possible for patients, their loved ones and for the staff who care for them. The scheme has had a dramatic impact on patients and professionals since the King's Fund launched the programme in 2001.

Our scheme provides a complete modification and revitalization of the route to and the bereavement suite itself. The walkway in between the buildings has become a private memorable journey created through the use of a simple palette of natural textural materials, juxtaposed to create a flowing, restful environment. The relocated waiting room leads directly out into a private courtyard with feature timber bench, galvanised planter bay with bamboo and a small low level water feature. A sculptural timber wall behind the planting creates an organic tactile feel. The interior is simple, fresh and contemporary with natural materials and high quality furnishings and lighting.



## adam and eve pub, mill hill

nicolas tye architects were involved in the two phases of restoring the local drinking and dining venue at the adam and eve pub in mill hill, london.



The site is located along the Ridgeway Lane and lies within the Mill Hill Conservation area. The first phase involved a complete refurbishment and internal modification of the existing property. The second phase involved the design of a rear extension to the existing pub in order to create more space to facilitate additional dining and drinking facility and to create a direct link with the garden space.

The rear extension provides additional seating space which opens up to the rear garden. The clients are keen to improve the existing pub and provide a good ambience in the pub for the local residence, yet respecting the character of the conservation area.

The proposed scheme includes a free flowing ground floor bar area, with the more intimate private function rooms located on the first floor and a manager's flat at the top floor. The open plan ground floor along with high quality internal fittings create a relaxing yet sophisticated venue for the local community to enjoy.

The pub has since opened for business and has become a popular place where the local community meet and enjoy on a regular basis.



## beau sejour, guernsey

A rhythmical, simple faceted facade with timber framed primary structure and elegant glazing providing a welcoming facade to this existing building



A glowing and inviting extension to an existing established complex providing a new welcoming entrance and circulation connections to the entire 18,000m<sup>2</sup> facility. The scheme also provided a new health club, studios, gym, sauna, spa and was constructed as a phased solution to allow the continued use of the facilities throughout construction.

project completed with orms



## working woodland centre

a community building that opens to the public, offering facilities to educate and enhance the experience of visitors to the woodland



The Working Woodland Centre in Maulden, Bedfordshire is a community building that opens to the public, offering facilities to educate and enhance the experience of visitors to the woodland, creating new opportunities and improve the overall image of the surrounding area.

The design has been carefully considered, respecting the natural wildlife and vegetation to ensure a long term solution. The proposed building utilises local natural materials to locate and blend into the surrounding context. The exterior of the building consists of untreated timber cladding and glass, which is replicated internally. It is designed to adapt to seasonal changes, promoting the beauty of timber. The glazed elements provide natural light throughout the building, creating a sense of space.

A large play area is provided for children and their family, as well as inclusive design to ensure the facilities can be enjoyed by all. The centre also benefits from a range of sustainable features such as bio-mass heating, high specification insulation, high specification glazing, rainwater harvesting, reed bed sewage system, permeable parking specification, air heat exchanger, wood burning stove and organic paints and stains.