

living arts commercial regeneration retail education community



nicolas tye architects

spring bulletin 2014



St.Albans apartments!

A new build apartment block near to the centre of town providing 22,000 sq ft of space for 16 flats with 16 underground parking and storage spaces providing a high end solution with elegant and robust long life materials. This site has had its site value doubled with the elegance of timeless designed apartments to this city centre location. There are 12 apartments of varying sizes from 80-200m2 with high specification living and sleeping accommodation, all with high levels of natural light and elegancy to open plan living accommodation.

[Click for full project description.](#)



Hulicote house, NPPF paragraph 55 house

Located on the western edge of bedfordshire this rural location with its local stream and recreating of woodland environment whilst also making landscape improvements by demolition of the existing farm/agricultural buildings provides a net gain and improvement of landscaping and providing a high level design quality single dwelling in open countryside. The design driver was to allow the building to flow our from the landscape and provide a geology based inspiration in its tectonic and geological forms.

[Click for full project description and more images](#)



Pred pekelna house, slovakia

Located high up in the upper Tatra mountains this innovative house with a series of 12 housing provides a elegant solution to visiting tenants with a single family providing 4 bedrooms, 3 en-suites and open plan living areas with fireplaces to each. There are also external terrace areas with outdoor cooking and covered areas with space for hot tubs and storage to suit any family.

[Click for full project description](#)



Sports Hall Community Centre

This new facility in Kent replaces an existing facility built in the 1970's which does not meet the requirements of the local authority and community needs and usage requirements. This new facility provides extended and flexible facilities from the previous building with disability compliant facilities and lighting and air control systems which are at the cutting edge of sports facilities. This mixed use schools and community facility is due to commence on site for construction next year.

[Click for full project description](#)



Nicolas Tye Architects Eco lodges featured in a BBC programme called 'Restoring England's Heritage' in December 2013. The Eco lodges were built for overnight accommodation for any that use the many trails in the area and visitors of Old St Mary's church which is being restored. They are due for completion in Spring 2014.



Rum point, cayman island

More exciting progress with our Rum point project. We think it's looking great so far, cannot wait to see the photography when its completed, which shouldnt be much longer hopefully!

[Click for full project description](#)



Come and have a chat with us at Grand Designs Live at the Excel, stand B107! We'll be happy to help with any questions you may have!



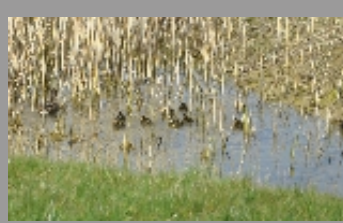
We are happy the Spring months are finally with us but looking back to the end of last year we all had fun at our Christmas do in London! We had a great day out and an amazing meal at the restaurant Pont dela tour.



We've had some new friendly faces join our team! Meet Naz, Dani, Marc, Ruben, Laura and Pablo!



We were approached by Redburn Upper School based in Ampthill and asked to take part in their career fair. We happily agreed to this! Here's Sarah on the stand.



We've had some new additions to our pond, some little ducklings on site at our studio!



Sarah and Rich visited Mark Rutherford school last month. Sarah done a presentation to school and college students.

Want to know more about what we can do for you?

t: 01525 406677 e: info@nicolastyearchitects.co.uk w: www.nicolastyearchitects.co.uk